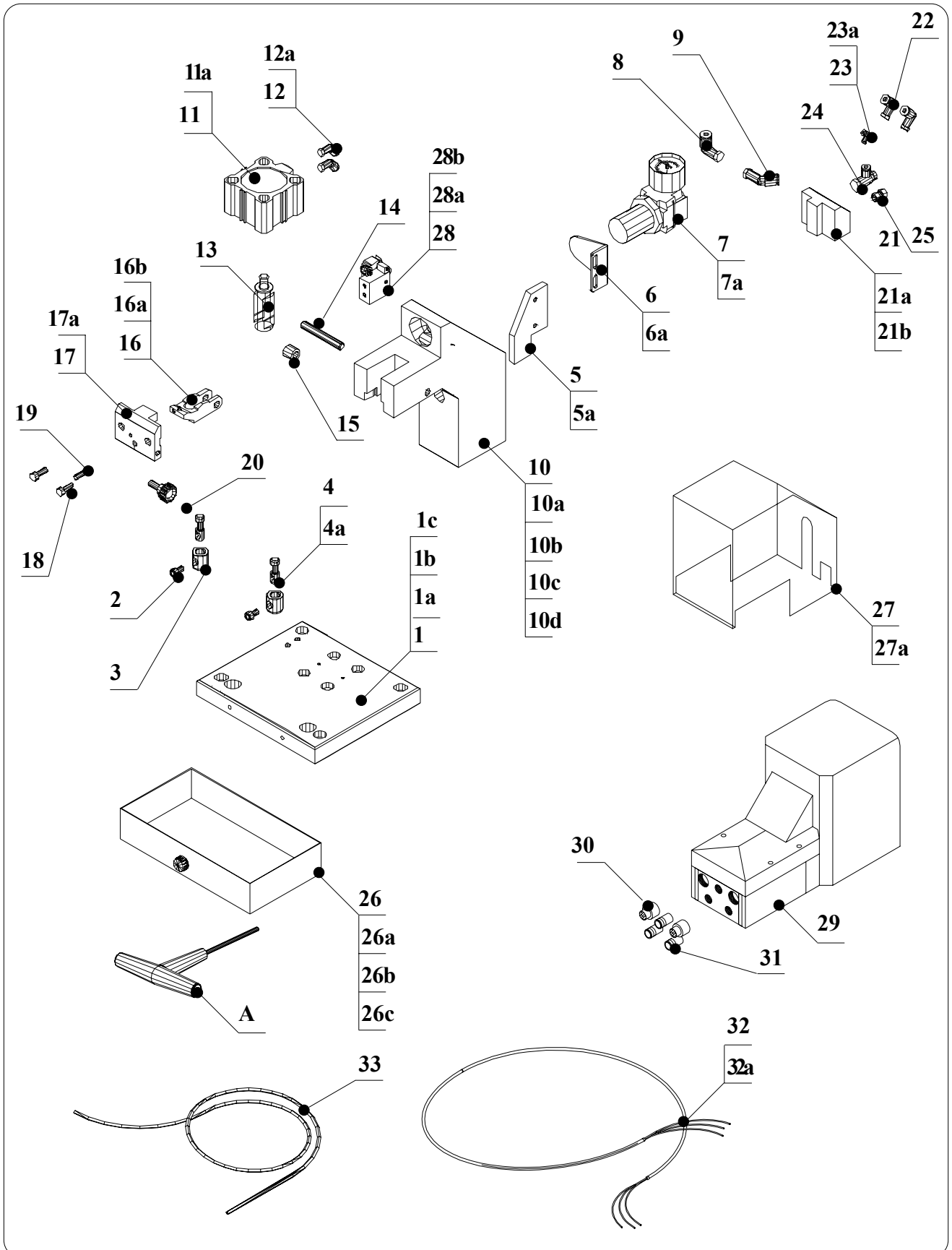


## - 11 - SPARE PARTS

### **11.1 WARNING FOR THE CUSTOMER**

Before ordering any particular spare part, it is always necessary to specify the serial number of the machine to which the part shall fit.

## 11.2 DETAILED DRAWING OF TP R-PR

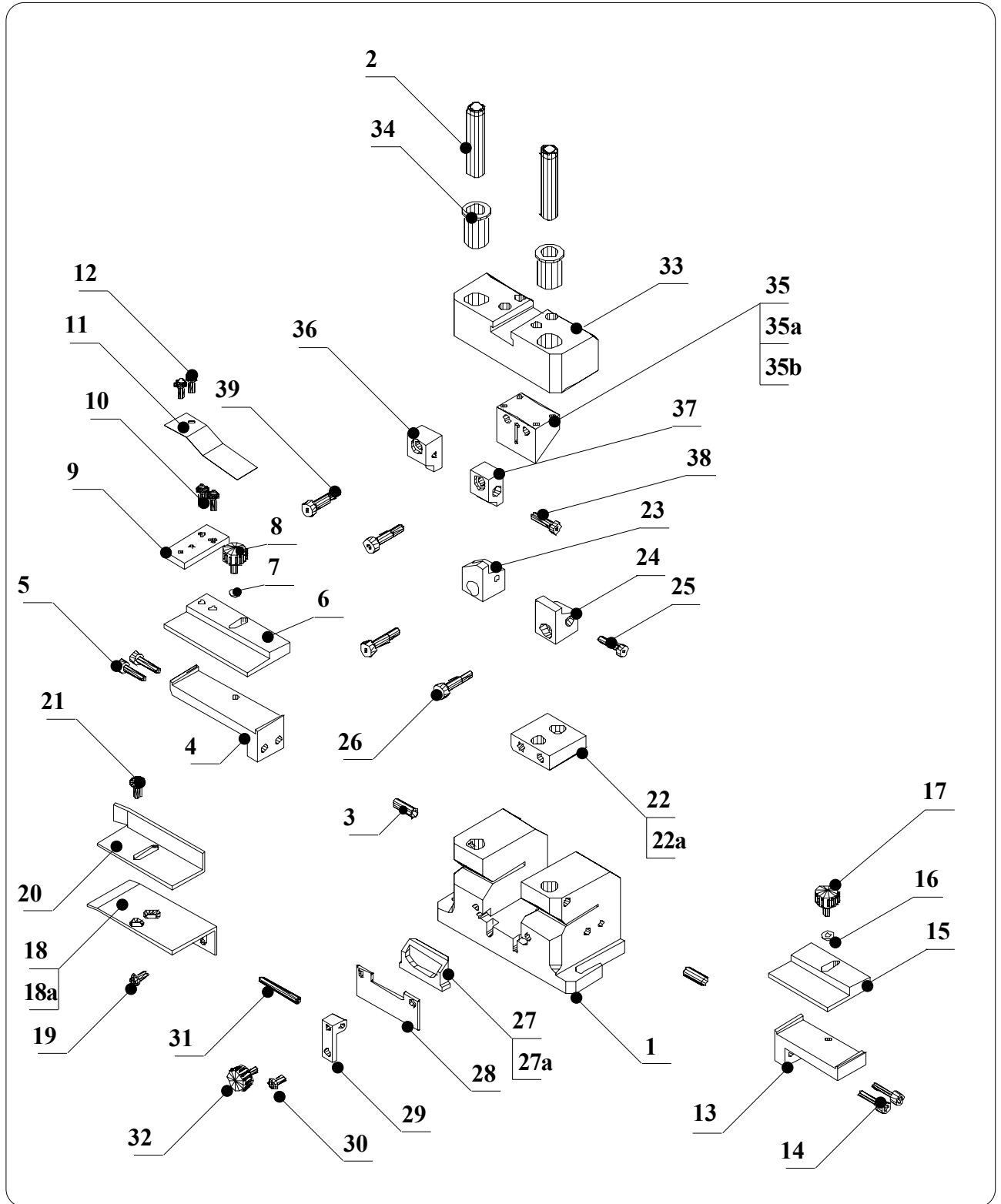


## 11.2.1 READING KEY FOR DETAILED DRAWING OF TP/R-PR PNEUM. PREFORMING MAC. WITHOUT SMS ASSEMBLY code. 90.000

Pos.	Articolo	Description	Q.tà
1	900001	BASE PLATE FOR R-PR	1
1a	900003	THREADED ENSAT BUSHING M9/M6X12	2
1b	400211	ENSAT BUSHING M5/M8X10	1
1c	750106	SCREW TBEI M5X10 UNBRAKO	2
2	GRPC0614	GRANO PCOM6X14	2
3	900002	BUSHING FOR SMS LOCKING PIN	2
4	900004	LOCKING PIN FOR SMS	2
4a	900005	SPRING D11750 D. 8.8 H=14.5	2
5	900015	BRACKET FOR AIR REGULATOR	1
5a	900019	CAP SCREW M5X25	2
6	150504	BRACKET B 220 FOR REGULATOR EAR 2000	1
6a	750106	SCREW TBEI M5X10 UNBRAKO	2
7	150502	AIR REGULATOR EAR 2000	1
7a	150503	PRESSURE GAUGE 0.10 MM FOR AIR	1
8	150501	PLASTIC ELBOW CONNECTOR KQL-06-01S 90° 1/4	1
9	900007	45 DEGR. CONNECTION KQK06-02S 1/4 FOR CYLINDER	1
10	900006	MACHINE BODY R-PR	1
10a	900022	CAP SCREW M12X40	4
10b	500018	SCREW PP M4X4 UNBRAKO	2
10c	750311	PARALLEL PIN Ø 6X14	2
10d	850417	PARALLEL PIN D. 3X16	2
11	900025	CYLINDER ECQ2B50-20D	1
11a	900020	CAP SCREW M6X55	4
12	900007	45 DEGR. CONNECTION KQK06-02S 1/4 FOR CYLINDER	2
12a	150510	RILSAN HOSE D. 6X4	2
13	900009	SMS JOINT	1
14	900035	LEVER HOLDING PIN	1
15	900034	LEVER SPACER	1
16	900028	STROKE ADJUSTMENT LEVER	1
16a	850416	SPRING D. 4.5X30	1
16b	900029	PARALLEL PIN D. 6X28	1
17	900010	FRONT PLATE	1
17a	900032	SOFT CUPPER CYLINDER	1
18	750314	CAP SCREW TCEI M5X15	2
19	300407	SCREW PT M6X16	1

20	400501	KNOB M6X16	1
21	900011	AIR FEED BOX FOR R-PR	1
21a	150508	SCREW TCEI M4X35	2
21b	900014	ALLEN CAP 1/8	1
22	150513	PLASTIC ELBOW CONNECTOR KQL-06-01S 90° 1/8 FOR AIR BOX	2
23	900013	AIR EJECTION REGULATOR EAS1200F-M5	1
23a	900023	RILSAN HOSE 4X2	1
24	900026	FLUX REGULATOR AS2301F-01-06S	1
25	950606	PIPE FITTING KQH-06-01S	1
26	950112	PART BIN FOR TP/R-PR	1
26a	500032	KNOB M4X8	1
26b	950308	WASHER Ø 4	2
26c	420034	NUT M4	1
27	900024	PLASTIC SAFETY COVER FOR R-PR	1
27a	XXXX		
28	900016	SAFETY VALVE FOR TP/R-PR	1
28a	930075	SCREW TCEI M4X20	2
28b	900017	CONNECTOR M5 TUBE 6-4 FOR SAFETY VALVE	2
29	150509	PNEUMATIC PEDAL AM 50010B	1
30	150512	SILENCER 2901 1/4 17 ON AIR EJECT	2
31	150514	PLASTIC CONNECTOR KQH-06-02S 1/4	3
32	150521	POLYESTER SHEATH 20mm. L 1500mm	1
32a	150510	RILSAN HOSE D. 6X4	3
33	150510	RILSAN HOSE D. 6X4	1
<b>ADJUSTMENTS TOOLSET</b>			
A	400804	ALLEN KEY mm. 3	1

# 11.3 DETAILED DRAWING OF SMS cod. 93.0001



### 11.3.1 READING KEY FOR DETAILED DRAWING OF SMS

#### 11.3.1.1 READING KEY FOR DETAILED DRAWING OF SMS cod. 93.0001 stand off-lock in

Pos.	Article	Description	Q.tà
1	930051	BASE FOR LOWER DIE SMS	1
2	930064	SLIDING SHAFT SMS	2
3	400305	SCREW PP M6X10	2
4	930061	SUPPORT FOR LEFT TAPE GUIDE SMS	1
5	930074	SCREW TCEI M5X20	2
6	930062	LEFT TAPE GUIDE SMS	1
7	420022	WASHER D. 5	1
8	930063	KNOB M4X15	1
9	930049	TAPE STRETCHER HOLDER	1
10	400114INOX	SCREW TBEI M4X8 STEEL	2
11	930048	TAPE STRETCHER SPRING	1
12	600050INOX	SCREW TBEI M4X6 STEEL	2
13	930059	SUPPORT FOR RIGHT TAPE GUIDE SMS	1
14	930074	SCREW TCEI M5X20	2
15	930060	RIGHT TAPE GUIDE SMS	1
16	420022	WASHER D. 5	1
17	930063	KNOB M4X15	1
18	930094	FRONT COMPONENT GUIDE SUPPORT	1
18a	740153	TUBULAR RIVET M5	2
19	750106	SCREW TBEI M5X10 UNBRAKO	1
20	930095	FRONT COMPONENTS GUIDE	1
21	750106	SCREW TBEI M5X10 UNBRAKO	1
22	930052	BLACK INSERT FOR LOWER DIE SMS	1
22a	930074	SCREW TCEI M5X20	2
23	930054	LEFT LOWER DIE/STAND OFF LOCK	1
24	930053	RIGHT LOWER DIE/STAND OFF-LOCK	1
25	930071	CAP SCREW M4X30	1

26	930073	SHOULDER CAP SCREW M5 L 20	2
27	930056	LOWER WIRE/LEAD HOLDER	1
27a	930055	SPRING D11430 D. 4.6 H=20 FOR WIRE/LEAD HOLDER SMS	2
28	930057	FRONT PLATE/WIRE HOLDER LOCKING	1
29	930058	REFERENCE PIN HOLDER/COMP.POSITIONING	1
30	750106	SCREW TBEI M5X10 UNBRAKO	1
31	930076	PARALLEL PIN D.4X35	1
32	500032	KNOB M4X8	1
33	930065	SUPPORT FOR UPPER DIE	1
34	930066	BUSHING F12/16/25 SMS ON SUPP.FOR UPPER DIE	2
35	930067	CUTTING BLADE SMS	1
35a	930075	SCREW TCEI M4X20	4
35b	930068	CONNECTION KQH04-M5 AIR EJECTION SMS	1
36	930070	LEFT UPPER DIE/STAND OFF LOCK IN	1
37	930069	RIGHT UPPER DIE/STAND OFF LOCK IN	1
38	930071	CAP SCREW M4X30	1
39	930072	SHOULDER CAP SCREW M5 L 16	2

*11.3.1.2 READING KEY FOR DETAILED DRAWING OF SMS code 93.0002 STAND OFF*

**\*\* this SMS is different from SMS code 93.0001 in following parts**

Pos.	Articolo	Descrizione	Q.tà
23	930102	LEFT LOWER DIE/STAND OFF	1
24	930101	RIGHT LOWER DIE/STAND OFF	1
33	930104	SUPPORT FOR UPPER DIE/STAND	1
36	930107	LEFT UPPER DIE/STAND OFF	1
37	930106	RIGHT UPPER DIE/STAND OFF	1

*11.3.1.3 READING KEY FOR DETAILED DRAWING OF SMS code 93.0003 LOCK IN - OFF SET*

**\*\* this SMS is different from SMS code 93.0001 in following parts**

Pos.	Articolo	Descrizione	Q.tà
23	930152	LEFT LOWER DIE/LOCK IN	1

24	930151	RIGHT LOWER DIE/LOCK IN	1
27	930103	WIRE/LEAD HOLDER/LOCK IN	1
33	930153	SUPPORT FOR UPPER DIE/LOCK IN	1
36	930155	LEFT UPPER DIE/LOCK IN	1
37	930154	RIGHT UPPER DIE/LOCK IN	1

*11.3.1.4 READING KEY FOR DETAILED DRAWING OF SMS code 93.0004 STRAIGHT CUT*

**\*\* this SMS is different from SMS code 93.0001 in following parts**

Pos.	Item	Description	Q.ty
23	930201	LOWER DIE/STRAIGHT CUT	1
27	930202	WIRE/LEAD HOLDER/STRAIGHT CUT	1
33	930203	SUPPORT FOR UPPER DIE/STRAIGHT CUT	1
35	930205	UPPER DIE/STRAIGHT CUT	1
36	930204	CUTTING BLADE/STRAIGHT CUT	1

*11.3.1.5 READING KEY FOR DETAILED DRAWING OF SMS code 93.0005 SMS POLARITY*

**\*\* this SMS is different from SMS code 93.0001 in following parts**

Pos.	Item	Description	Q.ty
23	930256	LEFT LOWER DIE POLARITY	1
24	930251	LOWER DIE/POLARITY	1
27	930252	WIRE/LEAD HOLDER/POLARITY	1
33	930104	SUPPORT FOR UPPER DIE/STAND 0,00	1
35	930255	CUTTING BLADE POLARITY	1
36	930257	LEFT UPPER DIE POLARITY	1
37	930254	UPPER DIE/POLARITY	1

*11.3.1.6 READING KEY FOR DETAILED DRAWING OF SMS code 93.0006 90° BENDING*

**\*\* this SMS is different from SMS code 93.0001 in following parts**

Pos.	Item	Description	Q.ty
22	930305	BLACK INSERT FOR LOWER DIE SMS 90° BENDING	1



23	930301	LOWER DIE/90° BENDING	1
26	930072	SHOULDER CAP SCREW M5 L 16	2
27	930304	WIRE LEAD HOLDER 90° BENDING	1
27a	930055	SPRING D11430 D. 4.6 H=20 FOR WIRE/LEAD HOLDER SMS	1
33	930302	SUPPORT FOR UPPER DIE/90° BENDING	1
36	930303	UPPER DIE/90° BENDING	1

*11.3.1.7 READING KEY FOR DETAILED DRAWING OF SMS code 93.0007 SURFACE MOUNTING*

**\*\* this SMS is different from SMS code 93.0001 in following parts**

Pos.	Item	Description	Q.ty
24	930351	LOWER DIE/SURFACE MOUNTING	1
27	930352	WIRE LEAD HOLDER SURFACE MOUNTING	1
33	930353	SUPPORT FOR UPPER DIE/SURFACE MOUNTING	1
35	930355	CUTTING BLADE SURFACE MOUNTING	1
36	930354	UPPER DIE/SURFACE MOUNTING	1

*11.3.1. READING KEY FOR DETAILED DRAWING OF SMS code 93.0008 TO92 CENTER LEAD SPREAD ON AND CUT P. 1,27*

**\*\* this SMS is different from SMS code 93.0001 in following parts**

Pos.	Item	Description	Q.ty
23	930403	LEFT LOWER DIE TO92 CENTER LEAD SPREAD ON AND CUT P. 1,27	1
24	930401	LOWER DIE/POWER TRANS.	1
24a	930402	LOWER CENTRAL BLACK INSERT/	1
27	930504	WIRE LEAD HOLDER TO92 CENTER LEAD SPREAD ON AND CUT	1
33	930507	SUPPORT FOR UPPER DIE TO92 CENTER LEAD SPREAD ON & CUT	1
35	930409	CUTTING BLADE TO92 CENTER LEAD SPREAD P. 1,27	1
36	930405	UPPER DIE/POWER TRANS.	1
37	930406	RIGHT UPPER DIE TO92 CENTER	1
37a	930404	CENTRAL UPPER BLACK INSERT/ POWER TRANS.	1

*11.3.1.10 READING KEY FOR DETAILED DRAWING OF SMS code 93.0010 TO92 CENTER LEAD SPREAD & LOCK*

**\*\* this SMS is different from SMS code 93.0001 in following parts**

Pos.	Item	Description	Q.ty
23	930502	LEFT LOWER DIE TO92 CENTER LEAD SPREAD ON AND CUT	1
24	930501	RIGHT LOWER DIE TO92 CENTER LEAD SPREAD ON AND CUT	1
24a	930503	LOWER CENTRAL BLACK INSERT TO92 CEN.LEAD SPREAD ON & CUT	1
27	930504	WIRE LEAD HOLDER TO92 CENTER	1
33	930507	SUPPORT FOR UPPER DIE TO92 CENTER LEAD SPREAD ON & CUT	1
34	930509	CUTTING BLADE TO92 CENTER LEAD SPREAD ON AND CUT	1
36	930506	LEFT UPPER DIE TO92 CENTER LEAD SPREAD ON AND CUT	1
37	930505	RIGHT UPPER DIE TO92 CENTER LEAD SPREAD ON AND CUT	1
37a	930508	UPPER CENTRAL BLACK INSERT TO92 CEN.LEAD SPREAD ON & CUT	1

*11.3.1.11 READING KEY FOR DETAILED DRAWING OF SMS code 93.0011 TO92 CENTER LEAD SPREAD/ 3 LEAD LOCK*

**\*\* this SMS is different from SMS code 93.0001 in following parts**

Pos.	Item	Description	Q.ty
23	930551	LEFT LOWER DIE TO92 CENTER LEAD SPREAD 3 LEAD LOCK	1
24	930552	RIGHT LOWER DIE TO92 CENTER LEAD SPREAD 3 LEAD LOCK	1
24a	930553	LOWER CENTRAL BLACK INSERT TO92 C.LEAD SPREAD 3 LEAD LOCK	1
27	930559	WIRE LEAD HOLDER TO92 CENTER LEAD SPREAD 3 LEAD LOCK	1
33	930557	SUPPORT FOR UPPER DIE TO92 C.LEAD SPREAD 3 LEAD LOCK	1
35	930558	CUTTING BLADE TO92 CENTER LEAD SPREAD 3 LEAD LOCK	1
36	930554	LEFT UPPER DIE TO92 CENTER LEAD SPREAD 3 LEAD LOCK	1
37	930555	RIGHT UPPER DIE TO92 CENTER LEAD SPREAD 3 LEAD LOCK	1
37a	930556	UPPER CENTRAL BLACK INSERT TO92 C.LEAD SPREAD 3 LEAD LOCK	1





### 11.4.3.1 READING KEY FOR DETAILED DRAWING OF AS1 AUTOM.SYSTEM FOR TAPED COMP. R-PR

<b>Pos.</b>	<b>Item</b>	<b>Description</b>	<b>Q.ty</b>
1	950101	P.V.C. BASE PLATE AS1	1
1a	500063	ENSAT BUSHING M4/M6,5 L.8	6
2	950602	AIR FEED BOX FOR MOTOR	1
2a	930071	CAP SCREW M4X30	2
2b	150513	PLASTIC ELBOW CONNECTOR KQL-06-01S 90° 1/8 FOR AIR BOX	6
2c	950606	PIPE FITTING KQH-06-01S	3
2d	950605	PLASTIC ELBOW CONNECTOR KQL-04-01S 90° 1/8	2
3	950601	5 WAY VALVE 358-035 AS1	1
3a	150508	SCREW TCEI M 4X35	2
3b	950308	WASHER Ø 4	2
3c	750108	NUT M4	2
3d	150513	PLASTIC ELBOW CONNECTOR KQL-06-01S 90° 1/8 FOR AIR BOX	1
3e	950606	PIPE FITTING KQH-06-01S	2
3f	950605	PLASTIC ELBOW CONNECTOR KQL-04-01S 90° 1/8	1
3g	950608	SILENCER 2931 1/8	2
3h	950607	EXTENTION 1/8-1/8 L.36 FOR SILENCER	2
4	950604	VALVE OR2LR-SB4-B	1
4a	930075	SCREW TCEI M4X20	2
5	950502	MOTOR 72 REV. AS1	1
5a	400117	SCREW TCEI M4X10	4
6	950503	MOTOR SUPPORT PLATE	1
6a	950504	MOTOR SPACER AS1	4
6b	950506	CAPSCREW M5X30	4
7	950505	MOTOR OUTER GEAR AS1	1
7a	750255	CP SET SCREW M6X8	1
8b	950402	OUTER GEAR AT STEP BY STEP DEVICE	1
8c	400413	SCREW PP M6X5	1
9	950401	STEP BY STEP SPEED CONTROL DEVICE	1
9a	750153	CAPSCREW M6X15	4
10	950404	CAM/R-PR CONTROL	1
10a	750255	CP SET SCREW M6X8	2
11	950403	MECHANIC VALVE SUPPORT/R-PR CONTROL	1
11a	750106	SCREW TBEI M5X10 UNBRAKO	2
11b	950603	MECHANIC VALVE 234-955 R-PR CONTROL	1
11c	750116	VITE TCEI M3X16	2
12	950301	SUPPORT FOR DRIVING WHEEL/TAPE FEED	1
12a	950209	CAPSCREW M6X20	4
12b	750315	FIX. BEARING 15X35X11	2
12c	850417	PARALLEL PIN D.3X16	2
13	950302	SHAFT FOR DRIVING WHEEL	1
14	950303	GEAR FOR DRIVING WHEEL	1
14a	400413	SCREW PP M6X5	1
15	950106	TAPE EJECTOR	1
15a	630002	CS SCREW M3X20	2
15b	300213	ELESTIC WASHER HOLE Ø 3	2
15c	430063	BLUED NUT M 3	2

OLAMEF TP R-PR  
U.M. 15/06/2002

16	950304	DRIVING WHEEL/TAPE FEED	1
17	750107	SCREW TCEI M4X12	3
17a	950308	WASHER Ø 4	3
18	950305	REMOVABLE SMALL COVER/FEED	1
19	950306	KNOB M5X25	1
20	950201	FREE WHEEL SUPPORT FOR TAPE FEED	1
20a	950209	CAPSCREW M6X20	2
21	950202	CENTRAL SHAFT FOR FREE WHEEL AS1	1
21a	750312	CAPSCREW M6X30	1
21b	780009	ELASTIC WASHER HOLE Ø 6	1
22	950203	BUSHING FOR FREE WHEEL AS1	1
22a	750255	CP SET SCREW M6X8	1
23	780006	COVER FOR FREE WHEEL/TAPE CENTERING	1
23a	950212	SCREW PP M6X25	1
24	950205	FREE WHEEL AS1/TAPE CENTERING P. 12,7	1
25	950210	CLIP E28	1
26	950206	STEEL BAR FOR TEFLON WHEEL	1
26a	400117	SCREW TCEI M4X10	2
27	950207	PIN FOR TAPE GUIDE/TEFLON WHEEL	1
27a	400117	SCREW TCEI M4X10	1
28	950208	TAPE GUIDE/TEFLON WHEEL	1
28a	500016	CLIP Ø8	2
29	950105	HOLDING GUIDE FOR R-PR PLATE	2
29a	400211	ENSAT BUSHING M5/M8X10	2
29b	950104	STEEL PLATE FOR P.V.C. BASE PLATE	2
29c	950209	CAPSCREW M6X20	4
30	400210	KNOB M5X16	2
31	950102	BRACKET FOR LEAD LENGTH ADJ.	1
31a	850204	CAP SCREW M5X35	2
32	950103	LEAD LENGTH ADJUSTING SCREW	1
32a	750401	POMELLO M6 BT.25 B-M6	1
32b	950113	ELASTIC PIN 3x16	1
33	150510	RILSAN HOSE D. 6X4	1
34	900023	RILSAN HOSE 4X2	1
<b>35</b>	<b>9915165</b>	<b>CONTROL DEVICE 220 V FOR TP/R-PR</b>	<b>1</b>
35a	6700.160/1	FRAME	1
35b	6700.160/2	"L" SHAPED COVER	1
35c	950114	SELF-THREADING SCREW Ø3,5X6,5	5
35d	400114	BH SCREW M4X8	6
35e	9915.173	CONTROL P.C. BOARD	1
35f	9915.175	KEYSTRIIP P.C. BOARD	1
35g	5916.101/A	EMERGENCY PUSH BUTTON	1
35h	5466.013	ON/OFF SWITCH WITH PLUG AND FUSE	1
35i	600024	POWER CORD	1
35l	5350.205	TRANSFORMER 220V	1
35m	600027	SCREW TCEI M4X15	2
35n	750108	NUT M4	2

**11.4.3.2** *READING KEY FOR DETAILED DRAWING OF AS1/14 AUTOMATIC SYSTEM FOR TAPED RADIAL COMPONENTS 220V. P=15mm code 95.OL14*

**\*\* this AS1 is different from the AS1 code 95.OL02 in the following parts**

<b>Pos.</b>	<b>Item</b>	<b>Description</b>	<b>Q.ty</b>
1	950111	BASE FOR AS1 P.15	1
14	950309	GEAR FOR TAPE FEEDING SHAFT P.15	1
15	950311	TAPE EJECTOR P.15	1
16	950307	DRIVING WHEEL/TAPE FEED P.15	1
18	950310	REMOVABLE SMALL COVER/FEED P.15	1
23	950213	COVER FOR FREE WHEEL/TAPE CENTERING	1
24	950211	FREE WHELL AS1/TAPE FEED P. 15	1
29b	950104	STEELPLATEFORP.V.C.BASEPLATE	2

**11.4.3.3** *READING KEY FOR DETAILED DRAWING OF AS1 AUTOM.SYSTEM FOR TAPED COMP. R-PR code 95.OL11*

**\*\* this AS1 is different from the AS1 code 95.OL02 in the following parts**

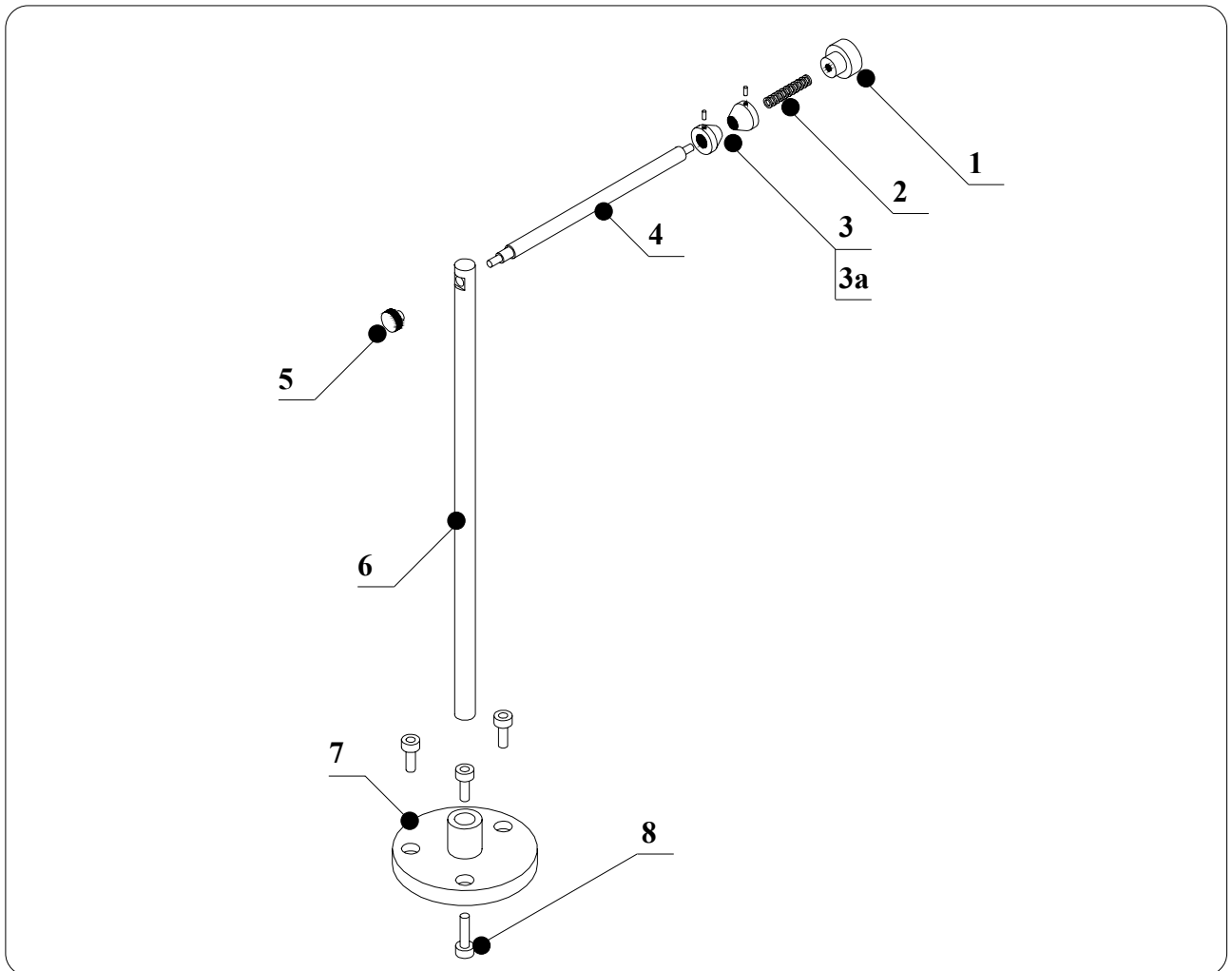
<b>Pos.</b>	<b>Item</b>	<b>Description</b>	<b>Q.ty</b>
35m	5350.206	TRANSFORMER 110 V	1

**11.4.3.4** *READING KEY FOR DETAILED DRAWING OF AS1/13 AUTOMATIC SYSTEM FOR TAPED RADIAL COMPONENTS 110V. P=15mm code 95.OL13*

**\*\* this AS1 is different from the AS1 code 95.OL02 in the following parts**

<b>Pos.</b>	<b>Item</b>	<b>Description</b>	<b>Q.ty</b>
1	950111	BASE FOR AS1 P.15	1
14	950309	GEAR FOR TAPE FEEDING SHAFT P.15	1
15	950311	TAPE EJECTOR P.15	1
16	950307	DRIVING WHEEL/TAPE FEED P.15	1
18	950310	REMOVABLE SMALL COVER/FEED P.15	1
23	950213	COVER FOR FREE WHEEL/TAPE CENTERING	1
24	950211	FREE WHELL AS1/TAPE FEED P. 15	1
29b	950104	STEELPLATEFORP.V.C.BASEPLATE	2
35m	5350.206	TRANSFORMER 110 V	1

## 11.5 DETAILED DRAWING OF BR1



### 11.5.1 READING KEY FOR DETAILED DRAWING OF BR1 cod. 950750

<b>Pos.</b>	<b>Item</b>	<b>Description</b>	<b>Q.ty</b>
1	400206	LARGE KNOB M12 FOR REELHOLDER	1
2	400204	SPRING FOR REELHOLDER	1
3	400203	CENTERING CONES FOR REELHOLDER	2
3a	210119	SCREW PP M6X12	2
4	400201	REELHOLDER	1
5	400205	SMALL KNOB M8 FOR REELHOLDER	1
6	950752	VERTICAL SHAFT FOR REELHOLDER	1
7	950751	BASE FOR AS1 REELHOLDER	1
8	950753	CAPSCREW M8X20	1